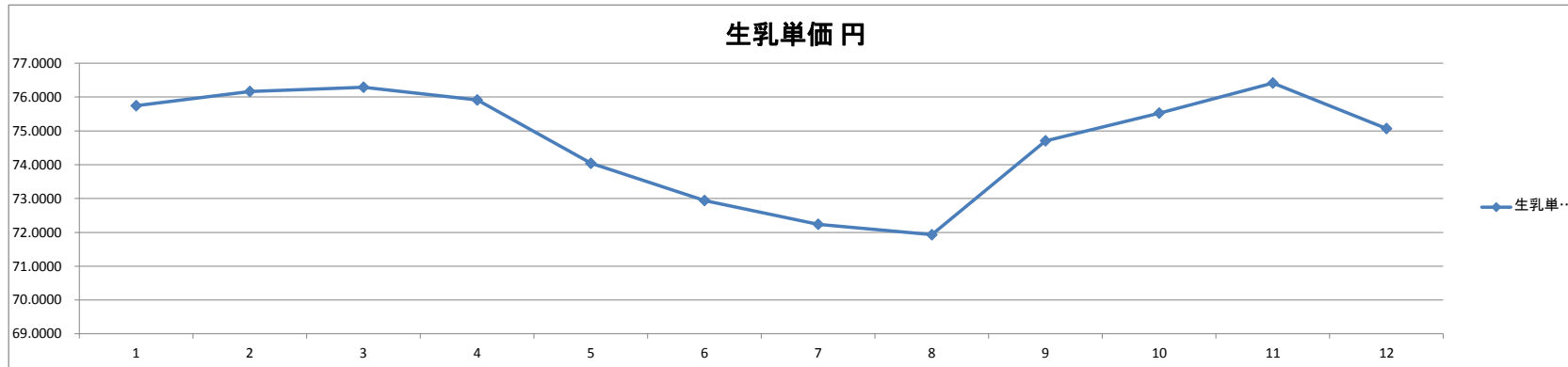


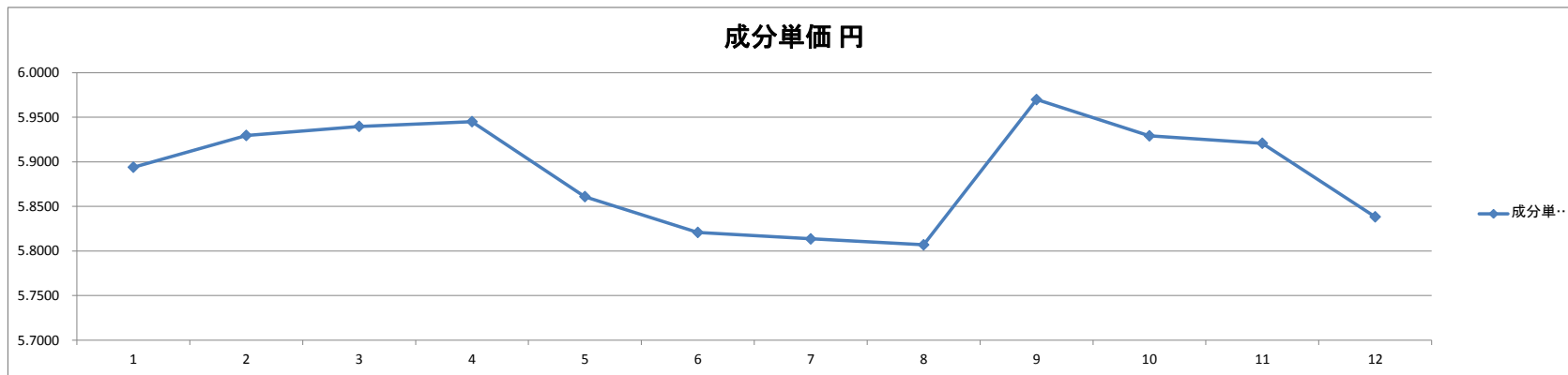
平成22年管内生乳受託販売の内訳

DAIRY北海道22事務局作成 2011.02.08

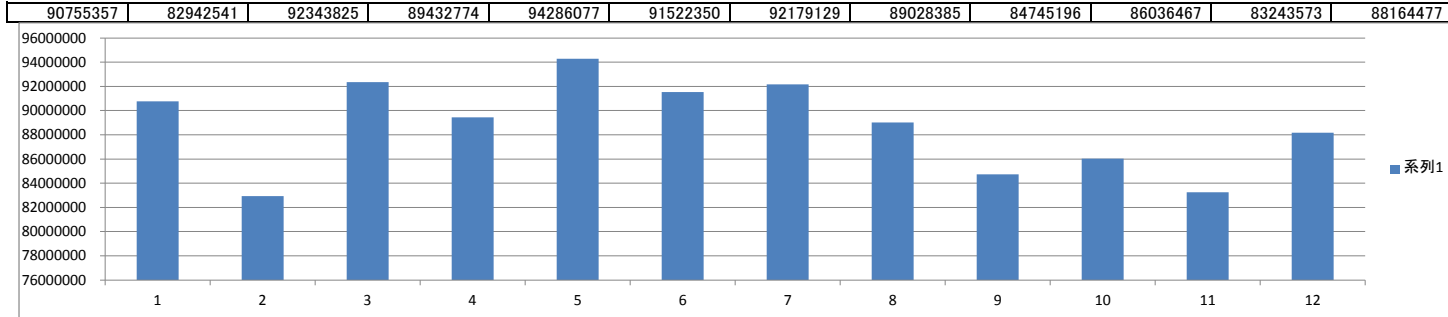
	1月	2月	3月	4月	5月	6月	7月	8月	9月	10月	11月	12月	
乳量 kg	90,755,356.5	82,942,540.9	92,343,825.0	89,432,773.6	94,286,077.0	91,522,350.1	92,179,128.9	89,028,384.5	84,745,196.2	86,036,466.6	83,243,572.7	88,164,477.3	1,064,680,149
乳代 円	6,874,176,551	6,317,428,670	7,045,022,815	6,789,162,365	6,981,175,929	6,675,772,767	6,659,006,136	6,403,873,251	6,331,073,233	6,498,051,521	6,361,056,390	6,618,508,130	79,554,307,758
単価 円	75.7440	76.1663	76.2912	75.9136	74.0425	72.9414	72.2398	71.9307	74.7072	75.5267	76.4150	75.0700	74.7213
脂肪 %	4.0410	4.0220	3.9980	3.9530	3.8770	3.8080	3.7520	3.7390	3.8060	3.9360	4.0400	4.0130	
無脂固形 %	8.8100	8.8230	8.8460	8.8160	8.7560	8.7230	8.6740	8.6480	8.7080	8.8020	8.8660	8.8450	
全固形 %	12.8510	12.8450	12.8440	12.7690	12.6330	12.5310	12.4260	12.3870	12.5140	12.7380	12.9060	12.8580	0.0000
単価 円	5.8940	5.9296	5.9398	5.9451	5.8610	5.8209	5.8136	5.8070	5.9699	5.9292	5.9209	5.8384	0.0000
補給金 円	459,321,944	401,010,609	494,122,565	464,004,060	495,397,918	387,450,713	370,836,640	356,914,782	274,930,361	316,356,096	326,189,951	392,614,046	4,739,149,685
単価 円	5.0611	4.8348	5.3509	5.1883	5.2542	4.2334	4.0230	4.0090	3.2442	3.6770	3.9185	4.4532	4.4512
清算乳代 円	80.8051	81.0011	81.6421	81.1019	79.2967	77.1748	76.2628	75.9397	77.9514	79.2037	80.3335	79.5232	79.1726



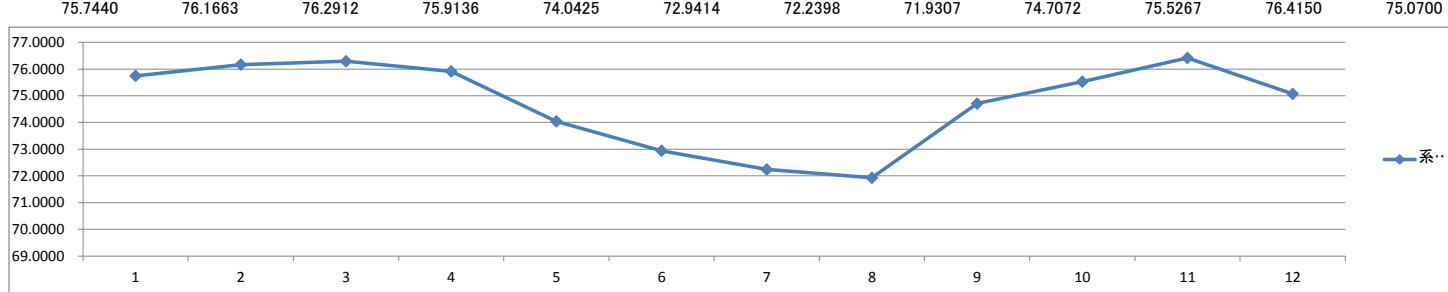
生乳単価 円	75.7440	76.1663	76.2912	75.9136	74.0425	72.9414	72.2398	71.9307	74.7072	75.5267	76.4150	75.0700
成分単価 円	5.8940	5.9296	5.9398	5.9451	5.8610	5.8209	5.8136	5.8070	5.9699	5.9292	5.9209	5.8384



生産乳量の月別変化

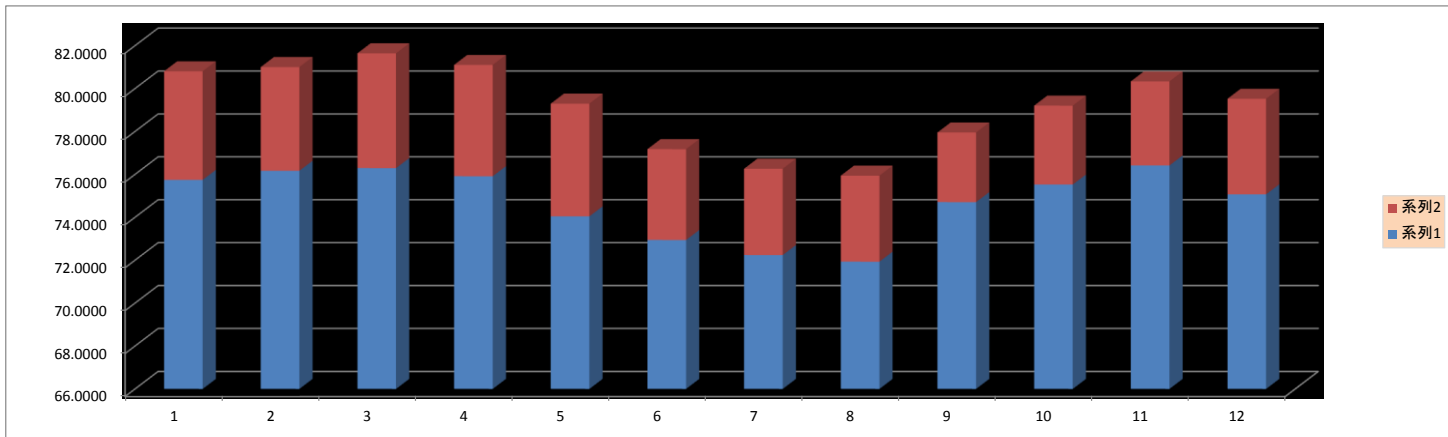


月別清算単価の変化



清算単価と補給金の变化

75.7440	76.1663	76.2912	75.9136	74.0425	72.9414	72.2398	71.9307	74.7072	75.5267	76.4150	75.0700
5.0611	4.8348	5.3509	5.1883	5.2542	4.2334	4.0230	4.0090	3.2442	3.6770	3.9185	4.4532



平成22年1月～平成23年～平成24年～平成25年～平成26年12月 管内生乳受託販売の内訳

DAIRY北海道22 事務局作成

	平成 22 年												平成 23 年												平成 24 年													
	1月	2月	3月	4月	5月	6月	7月	8月	9月	10月	11月	12月	1月	2月	3月	4月	5月	6月	7月	8月	9月	10月	11月	12月	1月	2月	3月	4月	5月	6月	7月	8月	9月	10月	11月	12月	1月	
① 受託戸数 戸	1,528	1,528	1,524	1,512	1,512	1,512	1,509	1,507	1,506	1,505	1,499	1,491	1,487	1,485	1,479	1,463	1,458	1,456	1,453	1,449	1,448	1,448	1,443	1,436	1,427	1,422	1,421	1,409	1,400	1,397	1,396	1,395	1,394	1,390	1,388	1,384	1,381	
乳量 kg	90,755,356.5	82,942,540.9	92,343,825.0	89,432,773.6	94,286,077.0	91,522,350.1	92,178,128.9	89,028,384.5	84,745,196.2	86,036,466.8	83,243,572.7	88,164,477.3	89,803,522.8	82,542,727.3	91,981,918.2	89,701,665.7	93,350,565.4	89,462,822.3	90,395,339.9	89,108,783.2	85,027,893.1	87,442,562.0	84,859,036.7	89,063,401.6	90,968,508.7	86,029,348.9	92,860,093.4	90,461,803.6	94,342,086.0	90,600,895.5	92,220,451.0	90,561,458.2	85,977,848.4	88,515,189.0	85,345,704.2	89,278,164.2	91,278,856.9	
乳代 円	6,874,176,551	6,317,428,760	7,045,022,815	6,789,162,365	6,981,175,929	6,675,772,767	6,659,006,136	6,403,873,251	6,331,073,233	6,498,051,521	6,361,056,390	6,618,508,130	6,672,251,894	6,120,522,160	6,805,329,655	6,822,270,832	7,062,743,485	6,720,579,414	6,969,674,145	6,832,677,357	6,612,361,179	6,790,204,541	6,578,404,329	6,897,605,929	6,999,729,922	6,617,306,892	7,106,624,657	6,939,232,849	7,146,089,167	7,125,764,898	7,494,532,339	7,268,637,257	6,846,218,293	7,075,827,976	6,887,901,609	7,215,144,222	7,333,143,616	
単価 円	75.7440	76.1663	76.2912	75.9136	74.0425	72.9414	72.2398	71.9307	74.7072	75.5267	76.4150	75.0700	74.2983	74.1497	73.9855	76.0551	75.6583	75.1215	77.1021	76.6771	77.7670	77.6533	77.5216	77.4460	76.9467	76.9192	76.5304	76.7090	75.7466	76.6500	81.2676	80.2619	79.6277	79.9391	80.7059	80.8155	80.3378	80.3378
③ 税抜き 円	72.1372	72.5394	72.6583	72.2987	70.4575	69.4680	68.7999	68.5054	71.1497	71.9302	72.7762	71.4952	70.7603	70.6188	70.4624	72.4334	72.0555	71.5443	73.4306	73.0258	74.0638	73.9555	73.7581	73.2826	73.2564	72.8861	73.0562	72.8861	72.1396	74.9048	77.3977	76.4399	75.8359	76.1325	76.8628	76.9672	76.5122	76.5122
脂肪 %	4.0410	4.0220	3.9980	3.9530	3.8770	3.8080	3.7520	3.7390	3.8060	3.9360	4.0400	4.0130	4.0320	3.9930	3.9570	3.9160	3.8790	3.8070	3.7570	3.7470	3.8130	3.9490	4.0010	4.0520	4.0330	4.0130	3.9790	3.9230	3.8330	3.8160	3.7940	3.7980	3.7670	3.8820	4.0140	4.0600	4.0230	4.0230
無脂固形 %	8.1000	8.2300	8.8460	8.8160	8.7560	8.7230	8.6480	8.7080	8.7080	8.8020	8.8650	8.8450	8.8510	8.8400	8.8310	8.8250	8.8040	8.7750	8.7900	8.7210	8.7330	8.8160	8.8550	8.8650	8.8580	8.8530	8.8350	8.8130	8.7630	8.7800	8.7400	8.7030	8.7220	8.8160	8.8870	8.9120	8.8560	8.8560
全固形 %	12.8510	12.8540	12.8440	12.7690	12.6330	12.5310	12.4260	12.3870	12.5140	12.7380	12.9060	12.8580	12.8830	12.8330	12.7880	12.7410	12.6830	12.6520	12.4660	12.4680	12.5460	12.7650	12.8560	12.9170	12.8910	12.8660	12.8140	12.7360	12.5960	12.5960	12.5340	12.4910	12.4890	12.7000	12.9010	12.9720	12.8790	12.8790
② 単価 円	5.8940	5.9296	5.9398	5.9451	5.8610	5.8209	5.8136	5.8070	5.9699	5.9292	5.9209	5.8384	5.7672	5.7781	5.7855	5.7855	5.9693	5.9266	6.1850	6.1499	6.1985	6.0833	6.0300	5.9957	5.9690	5.9724	6.0230	6.0135	6.2440	6.4838	6.4256	6.3758	6.2944	6.2558	6.2300	6.2379	6.2379	
★ 補給金 円	459,321,944	401,010,609	494,122,565	464,004,060	495,397,918	387,450,713	370,836,640	356,914,782	274,930,361	316,356,096	326,189,951	392,614,046	441,141,839	399,820,442	528,997,234	437,385,322	447,242,551	386,237,830	338,874,051	345,977,653	279,554,700	329,737,138	339,537,997	421,136,280	454,624,212	385,385,881	431,975,868	437,011,923	450,832,521	403,989,385	397,138,126	392,629,214	294,783,652	338,614,880	360,594,129	440,628,399	490,660,426	
単価 円	5.0611	4.8348	5.3509	5.1883	5.2542	4.2334	4.0090	3.2442	3.6770	3.9185	4.4532	4.9123	4.8438	5.7511	4.6760	4.7910	4.3173	3.7488	3.8826	3.2878	3.7709	4.0012	4.2785	4.9976	4.4797	4.8519	4.8309	4.7787	4.4590	4.3064	4.3355	3.4286	3.8255	4.2251	4.9354	5.3754	5.3754	
★ 乳価 円	80.8051	81.0011	81.6421	81.1019	79.2967	77.1748	76.2628	75.9397	77.9514	79.2037	80.3335	79.5232	79.2106	78.9935	79.7366	80.9311	80.4493	79.4388	80.8509	80.5597	81.0548	81.4242	81.5228	82.1745	81.9443	81.3989	81.1823	81.5399	80.5293	83.1090	85.5740	84.5974	83.0563	83.7646	84.9310	85.7509	85.7132	85.7132
★ 税抜き 円	77.1983	77.3742	78.0092	77.4870	75.7709	73.7014	72.8229	72.5144	74.3939	75.6072	76.6947	75.9484	75.6726	75.4626	76.2135	77.3094	76.8465	75.8616	77.1794	76.9084	77.3516	77.7264	77.8313	78.4866	78.2802	77.7361	77.5380	77.8871	76.9183	79.3638	81.7041	80.7754	79.2645	79.9580	81.0879	81.9026	81.8876	81.8876

	平成26年											
	1月	2月	3月	4月	5月	6月	7月	8月	9月	10月	11月	12月
受託戸数 戸	1,333	1,330	1,326	1,310	1,307	1,307	1,307	1,305	1,305	1,299	1,298	1,298
乳量 kg	91,038,642.2	83,230,707.4	92,823,534.0	90,116,965.9	94,835,125.4	91,007,507.2	92,425,334.4	90,370,476.3	86,692,026.7	88,647,970.8	86,805,103.8	91,433,294.9
乳代 円	7,294,756,817	6,671,981,621	7,411,271,520	7,660,897,892	7,985,725,529	7,621,872,356	7,715,222,022	7,540,559,475	7,416,649,640	7,724,995,224	7,592,575,315	7,914,554,478
単価 円	80.1281	80.1825	79.8426	85.0106	84.2064	84.7477	83.4752	83.4405	85.5517	87.1414	87.4669	86.5610
③ 税抜き 円	76.3125	76.3452	76.0406	78.7135	77.9689	77.5442	77.2918	77.2597	79.2145	80.6864	80.9879	80.1490
脂肪 %	3.9880	3.9620	3.9250	3.8900	3.8030	3.7650	3.7410	3.7420	3.8350	3.9600	3.9900	3.9850
無脂固形 %	8.8660	8.8360	8.8350	8.7990	8.7690	8.7300	8.7130	8.6950	8.7650	8.8380	8.8750	8.8840
全固形 %	12.8540	12.7980	12.7600	12.6890	12.5720	12.4950	12.4540	12.4370	12.6000	12.7980	12.8650	12.8690
単価 円	6.2337	6.2637	6.2573	6.6996	6.6979	6.7025	6.7027	6.7091	6.7898	6.8090	6.7988	6.7263
★ 補給金 円	443,913,514	355,336,859	405,446,417	408,112,726	453,416,214	392,133,155	376,588,522	371,946,790	291,033,796	323,307,365	347,775,950	431,738,881
単価 円	4.8761	4.2693	4.3678	4.5539	4.7082	4.1947	4.0274	4.0299	5.0886	5.3515	5.7292	6.5693
★ 乳価 円	85.0042	84.4318	84.2102	91.5645	90.9146	89.9424	89.5026	89.4704	90.6403	92.4929	93.1961	93.1303
★ 税抜き 円	81.1886	80.8145	80.4095	85.2674	84.6771	83.7389	83.3192	83.2896	84.3032	86.0379	86.7171	86.7183

税引・税率
チーズ
補給金合計

月	乳代単価	補給金単価	TMS単価	乳代	補給金	TMS円	税抜き円	消費税	税抜き円
22.01	75.74403116	4.59	5.89	7,574,403.116	459,321.944	5.89	77,198273	3,1390	72,6051
02	76.16623673	4.01	5.93	7,616,632.673	401,010.609	5.93	77,374159	2,8023	73,3841
03	76.29121725	4.54	5.94	7,629,121.725	454,122.565	5.94	78,002922	3,2232	73,0680
04	75.91358393	4.64	5.95	7,591,258.393	464,004.060	5.95	77,486951	3,0667	72,8469
05	74.04249017	4.95	5.86	7,404,249.017	495,397.918	5.86	75,770857	3,2256	70,8169
06	72.94144829	3.87	5.82	7,294,144.829	387,450.713	5.82	73,701446	3,1145	69,8269
07	72.23984665	3.71	5.81	7,223,984.665	370,836.640	5.81	72,822854	3,1254	69,1145
08	71.93069114	3.57	5.81	7,193,069.140	356,914.782	5.81	72,514420	2,9854	68,9453
09	74.70716355	2.75	5.97	7,470,716.355	274,930.361	5.97	74,333880	3,0626	71,6446
10	75.52671301	3.16	5.93	7,552,671.301	316,356.096	5.93	75,607203	3,0831	72,4436
11	76.41498537	3.26	5.92	7,641,498.537	326,189.951	5.92	76,694677	2,9822	73,4328
12	75.07000929	3.93	5.84	7,507,000.929	392,614.046	5.84	75,948447	3,0477	72,0223
23.01	74.29833136	4.41	5.77	7,429,833.136	441,141.839	5.77	75,672616	3,0371	71,2612
02	74.14974475	4.00	5.78	7,414,974.475	399,820.442	5.78	75,462604	2,8653	71,4644
03	73.98551572	4.59	5.79	7,398,551.572	452,997.234	5.79	74,213496	3,0620	70,9225
04	76.0551187	4.37	5.97	7,605,511.870	437,385.322	5.97	77,309446	3,1195	72,9356
05	75.65828289	4.47	5.97	7,565,828.289	447,242.551	5.97	76,846507	3,2842	72,3741
06	75.12147774	3.86	5.97	7,512,147.774	386,237.830	5.97	75,861564	3,1223	71,9992
07	77.10213992	3.39	6.18	7,710,213.992	338,874.051	6.18	77,179409	3,3115	73,7907
08	76.67707306	3.46	6.15	7,667,707.306	345,977.653	6.15	76,908384	3,2285	73,4486
09	77.78696491	2.80	6.20	7,778,696.491	279,554.700	6.20	77,351576	2,2109	74,5560
10	77.65331151	3.30	6.08	7,765,331.151	329,737.138	6.08	77,268435	3,2242	74,4291
11	77.52155321	3.40							